



Jefferson County Home Builders Association's **Building Community** Newsletter

March 2003
Volume 2, Issue 2

Irwin insists on building his own Paradise

Paradise Bay Design and Construction just may be the only established construction firm in the state with an unlisted phone number. For years, Bill Irwin has kept his seven-man crew busy most of the year, strictly through referrals from satisfied customers.

Along with Dick Shold and Winton Cleary, Irwin is also WWW Enterprises, the entity that built the Tri-Area Commercial Center and Shold Business Park, home of Washington State University's extension and the Jefferson County Home Builders Association.

Bill's involvement with Wild Olympic Salmon no doubt earned him the honor of being named Port Hadlock's 1997 Citizen of the Year.

"The salmon are a unique resource that we're on the verge of losing. The salmon pounding their way up stream to die. . .when you do think about, it really is pretty impressive," Bill said. "I was involved in environmental causes even before I moved here."

Bill moved here 20 years ago from San Francisco, California

"It was by choice. I was one of those California guys who kept moving north," Bill said. "I like where I live. It's beautiful. The people are nice."

Bill's contributions to Wild Olympic Salmon are many, including years spent on its board of directors and the remodel of its office at 301 Chimacum Road

Bill was also on the H.J. Carroll Park Advisory Board. He single-handedly negotiated a contract with Jefferson County for Wild Olympic Salmon to lease



You know the fish, but do you recognize the man? He's Bill Irwin, who has, for years, built fine custom homes in Jefferson County. He is also responsible for constructing the Shold Business Park.

almost two acres on Chimacum Creek, within the park, to build an interpretive center in the future. He also contracted, pro bono, the park's bathroom — and enlisted other members of the JCHBA to donate their time.

"I think as we get a little older and grayer, we should give some back. Also, you get to the time of life where you have the time to do it," Bill realized long before he turned 58.

Bill is a director of the Jefferson County Home Builders Association. He supports local chambers of commerce, the Citizens Task Force for Land Use Reform, the Washington Rivers Council, National Arbor Society, Nature Conservancy, Wilderness Society, Blodel Reserve, the Seattle

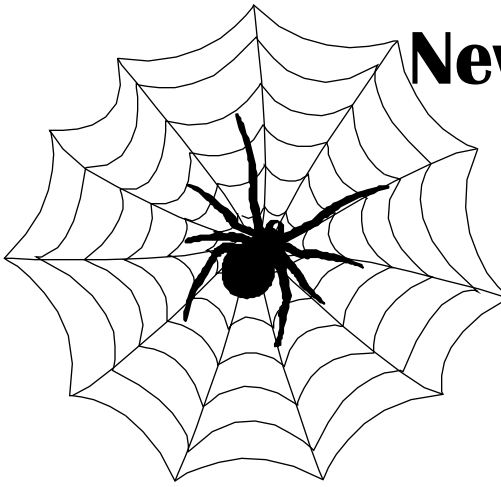
Art Museum and the Southern Poverty Law Center.

And yes, the man does know how to have fun.

"I've sailed competitively. I've been all over the world sailing," Bill said, of his 25 years battling winds and seas. "I've been across the Pacific to Hawaii, down the coast from California to Mexico, and done some international sailing in Bermuda, Australia, and New Zealand." He added, "I was just a crew member."

Bill recently married his longtime friend, Mary McCormack.

The Irwins have settled here, of course. Bill felt, "Jefferson County truly is one of the last bastions of custom home building because of its waterfront property and natural beauty."



New on the Web

Recent additions to www.jeffcohomebuilders.com

- Downloadable JCHBA, NAHB and BIAW logos
- JCHBA's *Building Community* newsletters
- Membership application
- No obligation health insurance premium quote
- A link to Kurt Schweizer's new www.schweizerconstruction.com

By now, I trust you've all checked out your business' entry and found the information correct. Also, if you have a Web site, make sure it's listed. If you don't have Internet access, call Sandy, at 379-8784. She'll make sure you get a print copy of your current listing in the online directory.

Remember, the entries in the printed membership directory will be pulled from this online directory.

Eldridge comment gains state attention

Did you notice the "Quote of the Month" in the Building Industry Association of Washington's February issue of *Building Insight*?

"The BIAW was the force that supplied the energy and funding to defeat R-53. If they had not done so, more payroll deductions (about \$400 per year) would have been paid by every employee. Employers would have had to pay higher unemployment premiums on each employee, as well. Your BIAW dues were well spent."



JCHBA President Bill Eldridge, commenting on BIAW's involvement in the defeat of R-53

Green Homes USA seeks conversation

Members of Jefferson County's "Green Homes USA" have put out feelers to see if, and how, the JCHBA would like to work with them locally. According to its Web site at www.olympus.net/community/greenhomes/, "Green Homes USA is a volunteer group focusing on uniting local talent for the design of homes that balance ecological integrity and economic viability."

Its mission is "to promote, educate, and raise awareness in the development of sustainable and affordable housing in local areas by: using house designs that use energy and resources efficiently; creating indoor environments that are sensitive to air quality, lighting, acoustics, and special aesthetics; minimizing construction waste and domestic waste; making optimum use of existing infrastructure; optimizing the local building materials through reuse and recycling; taking maximum advantage of environmentally benign materials; and optimizing natural land use and developing wet lands."

Anyone interested in pursuing this relationship should call Sandy, at 379-8784.

DOR's free business tax workshop

Tuesday, April 22

9 a.m. to noon

Port Angeles City Hall

Learn about the taxes that apply to your business, receive a comprehensive workbook that answers common questions, learn how to complete your tax return, find out your record-keeping requirements, get answers to your specific tax questions, and view ELF (electronic filing system).

Register by calling the Washington State Department of Revenue, at 360-457-2564.



For the mainstream home building industry:

- Educational Sessions
- Exhibits
- Product Demonstrations
- Tours
- National Green Building Awards

Find out more at www.nahbrc.org or 888-602-HOME(4663)



March 30-April 1, 2003
Marriott Waterfront
Baltimore, MD

You are a winner, now show the world!
National Green Building Awards for:

- Builders
- Advocates
- Programs
- Products

Apply at www.nahbrc.org

Brought to you by:

Sponsored by:

Special thanks to:
Fannie Mae
Lomas Industries
National Housing Endowment
Vinci Institute
Whitpool Corporation





A message from your president. . .

Bill Eldridge
Eldridge Homes, Inc.

As most of you know, I have been a member of Jefferson County Home Builder Association forever. I've also been attending state and national board meetings, off and on, for almost 20 years. During this time, I have met many people I never would have, if not for the association — and my participation.

While attending a meeting in Washington, D.C., a group of homebuilders were invited to the White House, by former President George Bush, to exchange ideas and hear what he wanted to share with our group. It was a chance of a lifetime for me to take a special private tour of the White House and attend a reception on the White House lawn.

From my experience, I personally feel the time I have spent on behalf of the association has been more rewarding than I could ever have imagined. I know of others who would agree: When they took the time and got involved, they got more from participating than they thought possible. I encourage you to become involved in the JCHBA — you will be pleased that you did.

It's that time of year to renew your medical insurance and R.O.I.I. (Return on Industrial Insurance) program. If you know someone, who is not currently a member, tell them about these money-saving programs — and the other important reasons to be a member of the JCHBA. Contact Sandy, at 379-8784, if you need more information.

I look forward to seeing you at our next meeting, March 20!

BIAW's "Friday Faxes"

The Building Industry Association of Washington issues a weekly memo to keep its members updated on the important issues currently affecting the building industry statewide. If you'd like to receive the interesting briefs via e-mail, call Greg at 1-800-228-4229, or e-mail gregs@biaw.com.

HBA increases dues

For the first time in as many years as anyone can remember. . . 12 perhaps? . . . JCHBA directors realized they had to raise dues in order to meet costs.

At the January 15 JCHBA board meeting, it was decided to raise dues \$50, effective March 1. Your dues went from \$300 to \$350.

On the heels of that decision came word that the National Association of Home Builders raised its dues \$10, effective on April 1. Two more \$10 increments from NAHB are scheduled for January 2004 and January 2005.

BIAW initiative I-841 battles ergonomics

The BIAW (Building Industry Association of Washington) has filed an initiative with the Secretary of State to repeal the job-killing ergonomics rule, adopted by this state's Department of Labor and Industries in 2000.

BIAW, along with most of the business community, has opposed the ergonomics rule because of the prohibitive compliance costs and lack of scientific justification.

The rule limits the amount of time workers can do repetitive motion, lifting, etc. to four hours per work day.

No one is denying that ergonomics-related injuries do occur. Voluntary safety programs have already reduced such injuries by 28 percent (1990-97).

Compliance with this state's ergonomics rule would add \$2408 to the cost of a two-story, 2000-square-foot single-family home.

Interestingly, both Safeway and Wal-Mart have managed to wangle special exemptions from this ergonomics rule.

Get your R.O.I.I. application in early and you could win a \$1500 Travel Voucher

BIAW will draw the names of three people who will each receive a \$1500 travel voucher to be used at the travel agency of their choice.

To qualify for the drawing, BIAW must be in possession of your 2003-2004 R.O.I.I. Enrollment application no later than 3:00 pm, March 28, 2003.

Winners will be notified by BIAW. Only qualifying applications for the R.O.I.I. program under the BIAW underwriting criteria will be eligible.





ROI info: Lara Seabaugh, 1-800-228-4229.

Hot topic: Contractor liability insurance

The present crisis . . .and the solution

Guest speaker

Merrilee DeForest, CIC

Certified Commercial Risk Counselor

Please RSVP by March 14. You *must* specify dinner choice:
Baked Halibut, Gourmet Meat Loaf, Chicken Alfredo or Barbecue Chicken
379-8784



**Join us at the
Inn at Port Hadlock
Thursday, March 20
6:30 p.m. cocktails
7 p.m. dinner
\$14**

JCHBA Officers

President: Bill Eldridge
437-2120
me@olympus.net

First Vice President: Bob Little
385-5606
bob@little-little.com

Second V. P.: Marianne Moe
437-2740
haroldmoe@olympus.net

Secretary: Dan Dankert
1-888-323-7646

Treasurer: Rick Gore
385-6883

Board Members:
Rick Tollefson
Kevin Miller
Bill Irwin

Executive Officer:
Sandy Hershelman
379-8784 (fax: 379-8785)
jchba@olympus.net

Editor: Sandy Hershelman

360.379.8784
Jefferson County
Home Builders Association
P.O. Box 1399
Port Hadlock, WA 98339

